

Pioneering for You

**wilo**

Drainage and sewage

Wilo grinder pumps

# Chopping solids for more operational reliability



# Pump technology for the future

## **Our promise to you**

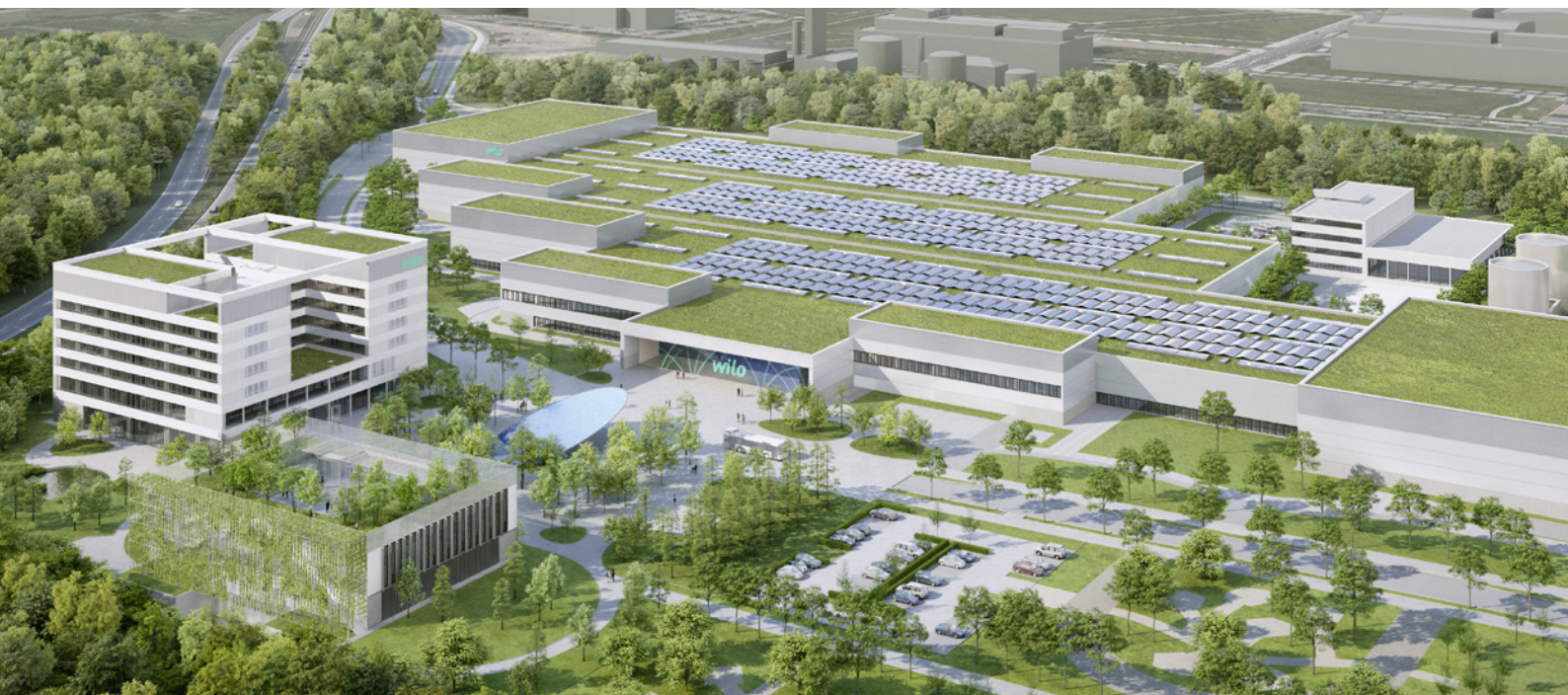
WILO SE is one of the world's leading premium pump and pump systems suppliers for building services, water management and the industrial sector. With around 8000 employees in more than 60 subsidiaries around the world, we develop smart solutions that connect people, products and services to effectively support you in your daily work. "Pioneering for You" is our lasting commitment to clear customer focus, unrelenting pursuit of quality and our special passion for technology.

As the digital pioneer of the pumps industry, we understand the challenges that will shape the future. As an innovation and technology leader, we provide integrated solutions to address them. We know that these issues play a major role in your daily work – and in turn, they play a major role in ours.

## **Sustainably better for you**

One of the most pressing tasks in times of limited natural resources is the responsible management of increasingly scarce resources. Efficiency, connectivity and safety will become more and more important in the future. We aspire to offer you sustainable, user-friendly, high-tech and high-performance solutions for building services and water management that are ahead of their time.

We work closely with our customers to create innovative products and systems that perfectly match their requirements and are rounded off with convenient services. The result is integrated solutions you can rely on at all times.



# Wilo grinder pumps with optimised hydraulics for reliable pressure drainage

The removal of sewage from single and two-family houses or large building complexes is becoming more and more of a challenge. The reason for this is the continuous reduction of water consumption – and the associated increase in problematic solids in sewage. More and more hygiene items, such as wet wipes or other solids, are being flushed down the toilet. This causes clogging, which often results in high costs. With the new grinder pumps from Wilo, we are facing this challenge head on.

## Non-clogging

→ [Wilo-Rexa MINI3-S](#)



→ [Wilo-Rexa FIT-S](#)



→ [Wilo-Rexa PRO-S](#)



Thanks to their high delivery head, Wilo-Rexa grinder pumps cover all building types – from single and two-family houses to commercial buildings and applications in industry and water management.

## Wilo-Rexa MINI3-S

# More operational reliability in the pressure drainage of single and two-family houses.

With the Wilo-Rexa MINI3-S, you ensure safe house and site drainage. The compact design and the radial macerator with double shear effect allow you to safely drain small pump sumps, such as cesspools or catchment shafts. Connecting the smallest possible pipework reduces your installation costs. The high-quality motor with double seal is easy to maintain. The stainless steel motor housing is corrosion-resistant – even if the motor is not submerged! The installation of the single-phase pumps is uncomplicated thanks to the low weight and the attached plug: you simply plug it into the existing socket. Pumps with an attached float switch start automatically. The pumps are switched on and off depending on the fill level.



- 1 Radial macerator with double shear effect
- 2 Motor housing made of corrosion-resistant stainless steel
- 3 Hydraulics/macerator combination
- 4 Discharge connection DN 32/40
- 5 Version with float switch available for level-dependent control



Further information on the Wilo-Rexa MINI3-S can be found in the Wilo Online Catalogue.

No high-voltage current required: you simply connect the pump to the socket. At the same time, you minimise your installation costs thanks to the small piping.

**WATER  
COLUMN UP TO  
5 FLOORS!**



Easy to install – and the pump is running!  
The macerator reliably chops solids and  
therefore ensures maximum operational  
reliability.

**WATER  
COLUMN UP TO  
8 FLOORS!**



## Wilo-Rexa FIT-S

Higher delivery head and more operational reliability for pressure drainage of apartment buildings and office complexes.

In commercial applications, the Wilo-Rexa FIT-S ensures fault-free pressure drainage in accordance with DIN EN 12050-1. The radial macerator with double shear effect reliably chops the solids. This prevents clogging and ensures safe operation of the submersible sewage pump. At the same time, the overall costs are significantly reduced: the optimised hydraulics guarantee a high degree of efficiency along with the maximum delivery head. The pump can also be connected to the smallest possible pipework. This reduces your installation costs. The stainless steel motor is lightweight and highly corrosion-resistant, even if the motor is not submerged. It's easy to maintain and has a long service life – thanks, among other things, to the high-quality sealing with two mechanical seals.



- 1 Radial macerator with double shear effect
- 2 Motor made of corrosion-resistant stainless steel
- 3 Motor seal with two mechanical seals
- 4 Optional monitoring of the sealing chamber
- 5 Version with float switch available for level-dependent control



Further information on the Wilo-Rexa FIT-S can be found in the Wilo Online Catalogue.

## Wilo-Rexa PRO-S

Robust, durable and reliable for pressure drainage in continuous operation for municipal and industrial applications.

For industrial and municipal applications, the Wilo-Rexa PRO-S is the perfect solution: the submersible sewage pump with macerator ensures fault-free pressure drainage in accordance with DIN EN 12050-1. The standard ATEX approval of the motor makes it possible to use it in Ex-zones 2 and 1. Equipped with a radial macerator with double shear effect, the pump guarantees reliable and, thanks to the high efficiency, cost-effective continuous operation. The high delivery heads guarantee efficient pressure drainage for installations with high static delivery head. The smallest possible pipework reduces installation costs. Its robust motor made of grey cast iron is designed for continuous operation and is easy to maintain. A high-quality seal with two mechanical seals and optional monitoring of the sealing chamber ensure a long service life for the pump.



- 1 Radial macerator with double shear effect
- 2 Robust motor housing made of grey cast iron, with ATEX approval for zone 1 as standard
- 3 Non-immersed operation in operating mode S2-30min
- 4 Two mechanical seals
- 5 Optional monitoring of the sealing chamber
- 6 Customer-specific adaptation: cable length, PTC sensors for frequency converter and soft start operation



Further information on the Wilo-Rexa PRO-S can be found in the Wilo Online Catalogue.



The Wilo-Rexa PRO-S is easy to configure and adapt to your system. It wins customers over thanks to its durability – even in potentially explosive atmospheres.





## A look inside the macerator

All grinder pumps from the Wilo-Rexa MINI3-S, Wilo-Rexa FIT-S and Wilo-Rexa PRO-S series have a durable, hardened macerator made of stainless, martensitic chrome steel (1.4528-59 HRC). The radial macerator with double shear effect chops solids at a speed of 24 m/s. The optimised hydraulic/macerator combination provides a higher delivery head with lower energy requirements.

## Series overview

	Wilo-Rexa MINI3-S	Wilo-Rexa FIT-S	Wilo-Rexa PRO-S
Discharge port	DN 32/40	DN 32/40	DN 32/40
Weight	17 kg	35-50 kg	45-65 kg
Max. delivery head	~ 20 m	~ 40 m	~ 40 m
Max. power 1~230 V, 50 Hz	0.75 kW	1.5 kW	1.5 kW
Max. power 3~400 V, 50 Hz	0.75 kW	2.5 kW	3.9 kW
Version	Stainless steel motor housing	Stainless steel motor housing	Grey cast iron motor housing
Immersed operating mode	S1	S1	S1
Non-immersed operating mode	S3-20 %	S2-15 min.	S2-30 min.
Application examples	Cesspools, collector tanks/ pump shafts	Sewage disposal for public toilets, pressure drainage power supply	Railway stations, industrial building complexes, municipal pumping stations

With Wilo-Rexa grinder pumps, you benefit throughout the entire life cycle of the pump: you save on installation costs by using the smallest possible pipes. You reduce your overall costs through optimised hydraulics with very high efficiency. Other than that, you ensure operational reliability at the optimum delivery head for your application – from single and two-family house to office complexes and municipal pumping stations.



### Wilo-Nexos NET-Intelligence

The digital solution for water management of pressure drainage systems.

Rely on the innovative pressure drainage system with Nexos Intelligence: it networks the individual pumping stations with each other, monitors them digitally and controls them via central control software. In this way, the pumping stations can be emptied according to individually developed algorithms – section by section or at specific intervals. Furthermore, the intelligent solution ensures that the optimum flow rates are maintained in the collector pipes. This minimises the risk of deposits and clogging in the entire pressure drainage system.

The submersible sewage pumps with macerator from the Rexa series can be selected according to the needs and requirements of a building and controlled via NET-Intelligence. This makes the pressure drainage system even more efficient.

Pioneering for You

*wilo*

WILO SE  
Wilopark 1  
44263 Dortmund

[www.wilo.com](http://www.wilo.com)